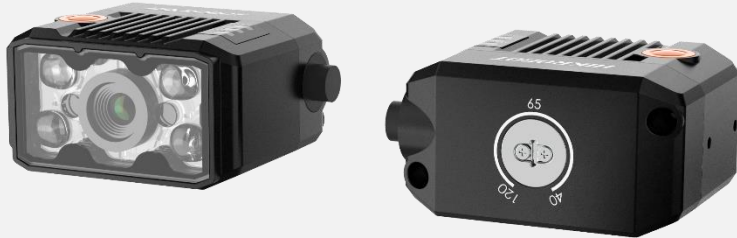


MV-ID2004M

0.4 MP Smart Code Reader



Introduction

MV-ID2004M smart code reader can read different types of 1-dimensional and 2-dimensional codes, and its max. reading speed reaches 41 codes/sec (network device) and 38 codes/sec (USB device) respectively. It adopts deep learning algorithm to process images with good robustness, and can recognize various codes.

Key Feature

- Built-in deep learning algorithm to read codes with good robustness.
- Compact design and small in size.
- Adopts aviation connector for single cable wiring.
- Adopts LED aiming light to help aim codes.
- Adopts focus knob for adjusting focusing manually.
- Adopts multiple IO interfaces and plug-in power interface.
- Supports multiple communication protocols, including TCP, Serial, FTP, Profinet, etc.

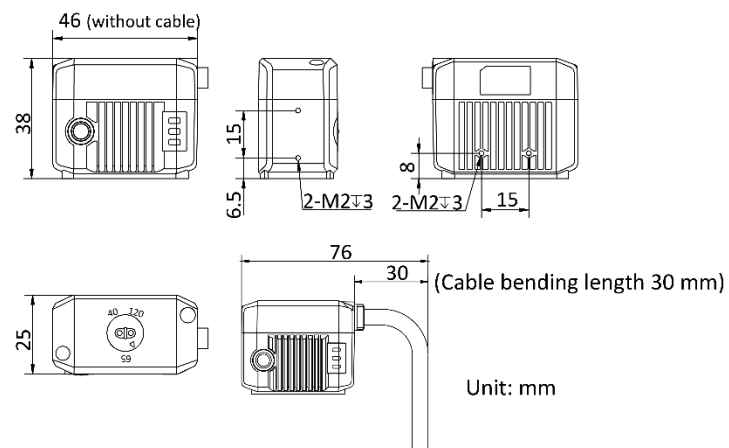
Applicable Industry

Consumer electronics, food and beverage, pharmaceutical, semiconductor, new energy, etc.

Available Model

- Red light source with network interface: MV-ID2004M-06S-RBN
- Blue light source with network interface: MV-ID2004M-06S-BBN
- White light source with network interface: MV-ID2004M-06S-WBN
- Red light source with USB interface: MV-ID2004M-06S-RBN-U
- Blue light source with USB interface: MV-ID2004M-06S-BBN-U
- White light source with USB interface: MV-ID2004M-06S-WBN-U

Dimension



Specification

Model	MV-ID2004M-06S-*BN	MV-ID2004M-06S-*BN-U
Performance		
Symbologies	1-dimensional codes: Code 39, Code 93, Code 128, ITF 14, ITF 25, CodaBar, EAN, UPCA, UPCE	
	2-dimensional codes: QR Code, Data Matrix	
Max. frame rate	60 fps	
Max. reading speed	41 codes/sec	38 codes/sec
Sensor type	CMOS, global shutter	
Pixel size	6.9 μm \times 6.9 μm	
Sensor size	1/2.9"	
Resolution	704 \times 540	
Exposure time	16 μs to 1 sec	
Gain	0 dB to 15 dB	
Mono/color	Mono	
Communication protocol	SmartSDK, TCP Client, Serial, FTP, TCP Server, Profinet, MELSEC, Ethernet/IP, ModBus, UDP, Fins, SLMP	SmartSDK, USB
Optics		
Focal length	6 mm (0.2")	
Working distance	40 mm to 120 mm (1.6" to 4.7"), adjusting focus manually supported	
Ambient illumination	0 lux to 50000 lux	
Light source	Red LED, blue LED, white LED	
Aiming system	Green LED	
Electrical feature		
Data interface	Fast Ethernet	USB3.0
Digital I/O	17-pin M12 connector provides power and I/O, including configurable bi-directional non-isolated I/O \times 4: input (Line 0/1) and output (Line 2/3) by default, RS-232 \times 1. Device trigger via pressing button on side supported.	17-pin M12 connector provides data transmission. Device trigger via pressing button on side supported.
Power supply	12 VDC to 24 VDC	5 VDC (USB3.0 provides power supply)
Max. power consumption	Approx. 10.6 W@24 VDC	Approx. 4.6 W@5 VDC (USB3.0 provides power supply)
Mechanical		
Indicator	Power indicator (PWR), network indicator (LNK), and status indicator (STS).	
Dimension	46 mm \times 38 mm \times 25 mm (1.8" \times 1.5" \times 1.0")	
Weight	Approx. 160 g (0.35 lb.)	
Ingress protection	IP65	
Temperature	Working temperature: 0 $^{\circ}\text{C}$ to 50 $^{\circ}\text{C}$ (32 $^{\circ}\text{F}$ to 122 $^{\circ}\text{F}$), storage temperature: -30 $^{\circ}\text{C}$ to 70 $^{\circ}\text{C}$ (-22 $^{\circ}\text{F}$ to 158 $^{\circ}\text{F}$)	
Humidity	20% to 95% RH, non-condensing	
General		
Client software	IDMVS	
Certification	CE, RoHS	

Detection Range

Working Distance	FoV		1D Single Pixel Accuracy (mm)	2D Single Pixel Accuracy (mm)
	H (mm)	V (mm)		
40	28.91	22.18	0.041	0.123
80	57.83	44.36	0.082	0.246
120	86.74	66.54	0.123	0.370

